

Structural Softness: Deciphering AW 26/27 Ready-to-Wear & Performance Fabric Trends *by UTC Marketing*

As the global market transitions firmly into an era of Eco-Accountability, Autumn/Winter 2026/27 marks a profound shift where tactile comfort meets strict functionality. Consumers are no longer chasing fleeting micro-trends; they are investing in versatile pieces that seamlessly bridge the gap between sartorial elegance and outdoor resilience. Here is our curated brief on the overarching textile and colour developments for the upcoming season:

The Palette: "Brown Power" & Metamorphic Highlights

The seasonal palette is anchored by rich, enveloping depth. "Brown Power"—ranging from bitter chocolate to warm caramel—acts as the new black, offering a grounding sense of security. Data from Heuritech highlights a 7% projected growth for desaturated creams and warm greys across European and US womenswear into 2027.

- **The Core:** Deep Bordeaux, forest green, and charcoal form the protective, luxurious foundation.
- **The Contrast:** Glimmer-inducing soft metallics, icy blues, and thermo-reactive accents inject futuristic energy into activewear and urban outerwear.

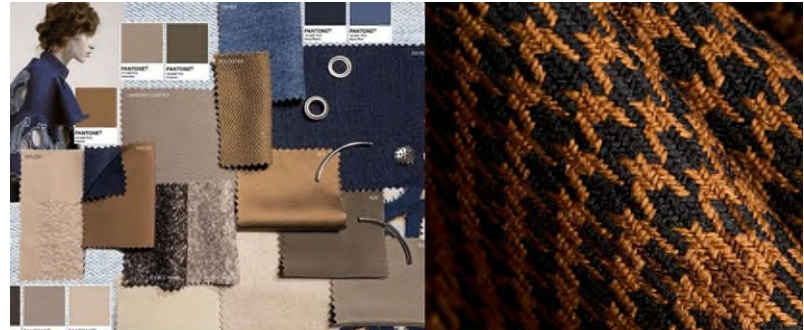
Ready-to-Wear: Craftsmanship Re-engineered

Classic silhouettes are being revitalised through irregular textures and sophisticated material depth, as seen at Première Vision:

- **The Return of Checks:** Masculine indigo and earth-toned checks are experiencing a notable resurgence, predicted to grow by 14% by 2027.
- **Sensory Luxury:** Brushed flannels, dense wool blends, and faux-fur accents dominate, prioritising a soft, premium hand-feel that flatters relaxed yet precise tailoring.

The latest news, views, and announcements

www.universal-tex.com marketing@universal-tex.com



Performance Tech: Clean Chemistry & Adaptive Mobility

With stringent PFAS bans tightening across the EU and US, performance textiles have pivoted towards non-toxic waterproofing and high-fluidity protection:

- **Bio-Based Finishes:** Plant-based waxes, carnauba, and algae oils are replacing fluorinated water repellents.
- **Low-Shedding Innovation:** High-performance fleeces now utilise advanced yarn structures (such as Polartec’s Shed Less technology) to dramatically curb microfleece shedding during laundering.

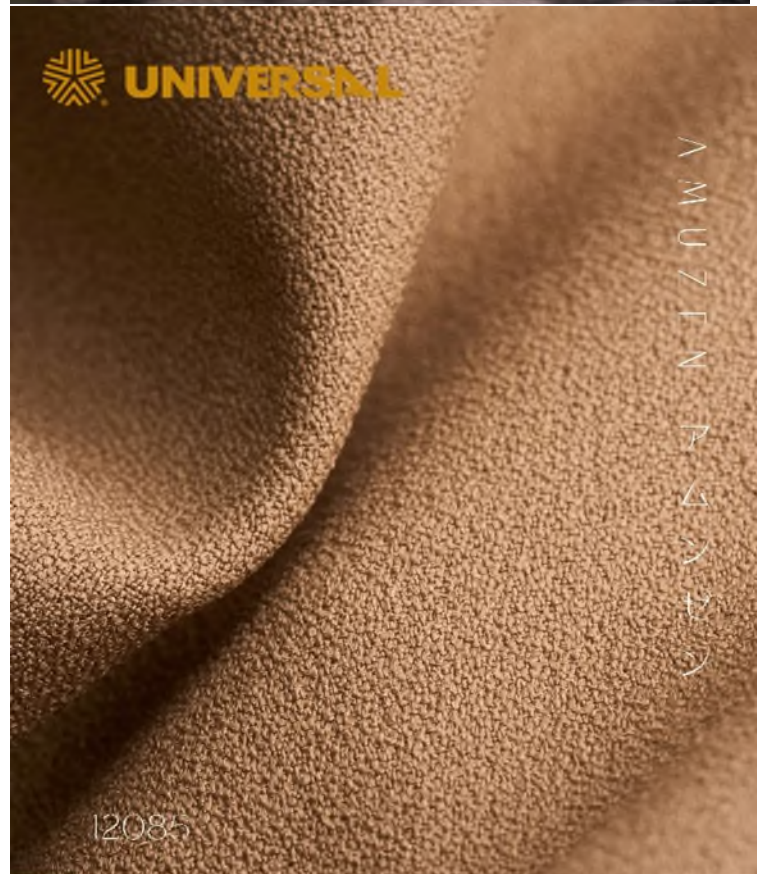
The Stratagem of Synthetic Fibres in Winter

Advanced synthetic materials are no longer viewed as mere substitutes for natural fibres; they are the linchpin of modern circular design due to three undeniable winter advantages:

1. **Circular Monomaterials:** Engineered as single-polymer textiles, recycled polyesters and nylons allow for seamless textile-to-textile recycling at the end of product life, perfectly aligning with incoming eco-legislations.
2. **Weightless Thermoregulation:** Utilising ultra-fine filaments—such as 10-denier Pertex Quantum nylon—synthetics trap ambient body heat using bio-based hollow-core fills, offering superior warmth without the cumbersome weight of traditional winter woollens.
3. **Enhanced Biodegradation:** Innovations like Fulgar’s AMNI SOUL ECO® polyamide 6.6 facilitate accelerated degradation under anaerobic landfill conditions, successfully mitigating the historical ecological footprint of synthetic waste.

As global fashion pivots toward eco-accountability and sensory minimalism for Autumn/Winter 2026/27, the line between elegant ready-to-wear and high-performance engineering has officially dissolved. Today’s consumers demand garments that seamlessly balance rich, tactile luxury with outdoor-grade weather resistance and sustainable circular design. To bring these macro trends directly to your next collection, Universal Textile presents a carefully curated selection of five premium fabrics.

Engineered with advanced synthetic advantages—including weightless thermoregulation, wrinkle-resistance, and PFAS-free weather defense—these structural weaves deliver unmatched commercial performance while



beautifully adapting to the season's sophisticated, grounded colour palettes.

Universal Textile : F/W Season's Top 5 Picks

1. Dobby (Sage Green - Item #12090)

Features: A refined, subtle geometric structure offering an organic texture and excellent dimensional stability for modern lifestyle outerwear.

2. Amuzen (Caramel Earth - Item #12085)

Features: Captures the essence of the season's "Brown Power" trend with a premium, pebbled pearlescent texture that delivers an exquisite hand-feel and fluid drape for relaxed tailoring.

3. Houndstooth (Classic Retro - Item #81473)

Features: Perfectly aligning with the resurgence of masculine heritage patterns, this bold, multi-toned weave brings structured sophistication to contemporary overcoats and jackets.

4. Dobby (Textured Grid - Item T00127)

Features: A dynamic, open-structured grid pattern that artfully blends depth and shadow, providing a highly tactile luxury aesthetic for statement ready-to-wear pieces.

5. Herringbone (Slate Grey - Item YY2185)

Features: A timeless chevron weave engineered with high-performance synthetic blends to achieve the classic, heavy look of traditional winter woolens without the burden of extra weight.

Contact Us : marketing@universal-tex.com

Data Sources :

The market insights, data projections, and textile trends outlined in this newsletter are synthesized from the latest 2026 definitive industry reports:

1. **Première Vision Paris (AW 26-27 Decodings & Eco-Innovation Focus):** Global ready-to-wear fabric insights, the resurgence of menswear-inspired check patterns (projected 14% growth into 2027), and low-impact dyeing developments.
2. **Heuritech Market Intelligence Report (AW 26-27 Consumer Framework):** Big data predictive analysis for global womenswear, identifying key palette shifts (including the projected 7% growth for desaturated cream tones).
3. **ISPO Textrends & Performance Days (A/W 26/27 Active Materials Forecast):** Non-PFAS durable water repellent (DWR) alternatives, microfibre-shedding mitigation tech (such as Polarc's Shed Less), the commercial integration of advanced circular solutions like Fulgar's AMNI SOUL ECO® anaerobic-degradable polyamide, and ultra-lightweight synthetic engineering featuring 10D Pertex Quantum nylon.

